

CDOT Working with Model Files and Sheet Files



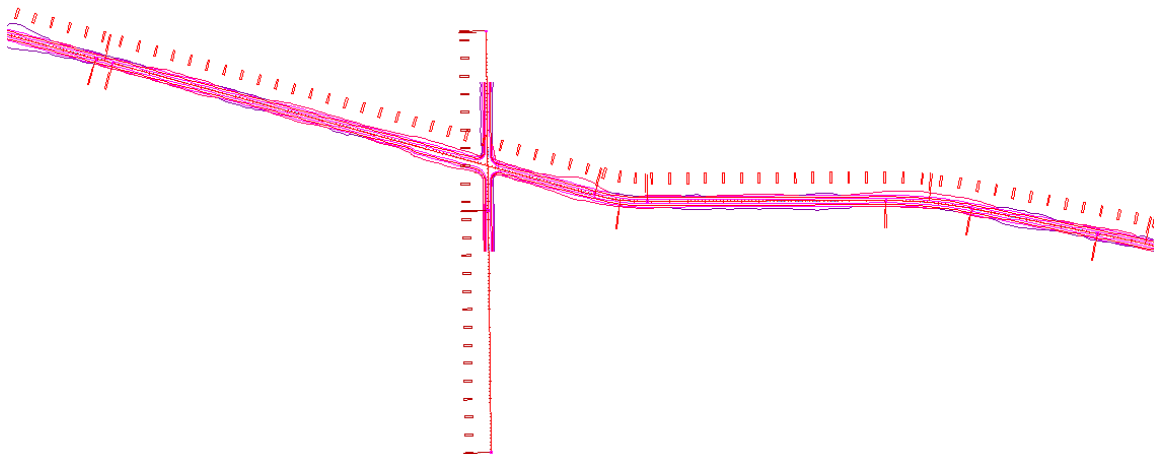
This document defines how to use and manage model and sheet files in a typical CDOT workflow. The document begins describing the data that each type of file should contain along with typical examples to illustrate the differences. The locations for storing these files are identified. The steps to create a new model and sheet files and how to change the file settings to work with different plotting scales are explained. Finally, the process for referencing model files for review or printing is covered.

File Types

Model Files

Model files usually contain design graphics that are placed at the correct real world coordinates or detail graphics that are not dependant on real world coordinates. Model files are files that are ready to be used as a reference file by other model files for further design or to be referenced by sheet files for the purpose of plotting. Typical data included in a model file that is drawn at the correct real world coordinates would include planometrics for alignments, contours, utility lines, building outlines, structures, and any other DTM features. Model file data that is not dependent on real world coordinates would include typical sections, profiles, detail drawings, and tabulation sheets.

A model file will usually contain only one type of data. For example, one model file would contain only existing topography data, while another would contain only geometry data. Separate model files should be used for cross-sections and profiles. Dividing the data types into separate model files will allow for the most flexibility in how the data is utilized both by the specialty group team members and the secondary users that need to reference the data. This method of managing model files also minimizes level management by not having unrelated data in the file.



Another characteristic of the design file is that the graphics in the file usually represent the entire project. These graphics will later be referenced into a sheet file and clipped to fit the boundaries of the sheet.

A distinct type of model file is the *working file*.

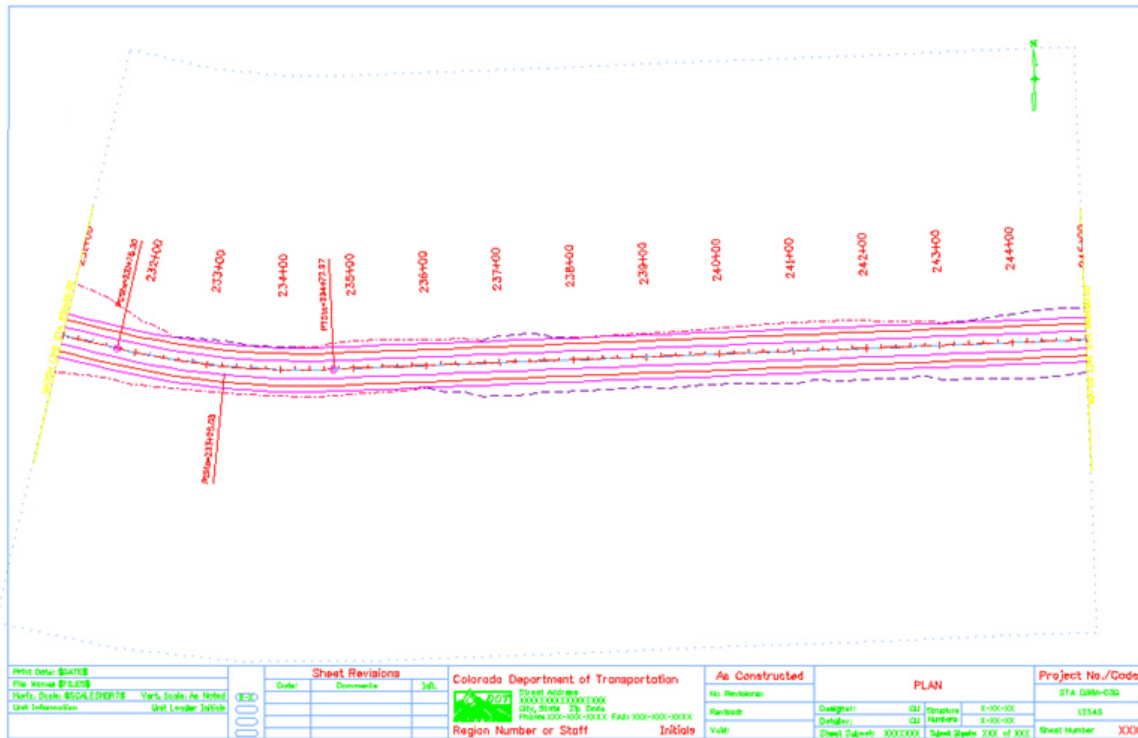
CDOT Working with Model Files and Sheet Files.pdf

Working Files

Working files are model files that are being developed and/or revised and are not ready for use by other specialty groups or team members. These files usually have the owners' initials included in the filename as a way to distinguish the file from the ready-to-use model file. The differences between a model file and a working file is the completeness of the file and its availability to others.

Sheet Files

Sheet files are MicroStation DGN files that contain the data required for printing. They are created by referencing in various model files that either represent directly or add clarification to the features that will be constructed from the printed sheet and a border file. In addition to containing reference files, typical data that would be included in a sheet would be informational text, such as callouts and dimensions, a directional arrow if appropriate, and other non-engineering information such as logos or stamps.



The graphics in a sheet file represent only a portion of the entire design and are usually included within a standard border. The image above is a portion of the graphic representing the design file on the previous page.

File Management

Each of these files is owned by the Project Manager of the specialty group whose data is contained in the file and updated by the assigned team member. A team member from one specialty group should not update the file(s) of a team member from another specialty group.

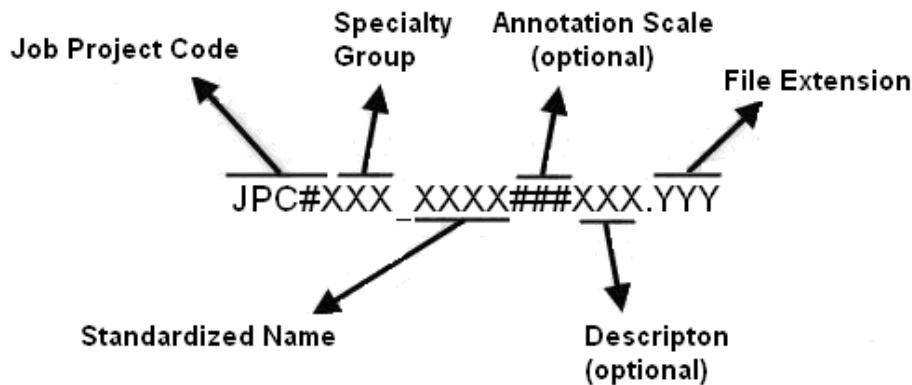
CDOT Working with Model Files and Sheet Files.pdf

File Naming Conventions

The CDOT naming standard uses a formula that restricts the character placement, ensures unique file names, and identifies the information contained in the file.

All CDOT projects must follow these file naming conventions. Standardizing file names is necessary for effective management of the large numbers of files needed to produce a set of design plans.

CDOT files are named in a standard format that identifies the file's project, the data contained within it, and the product used for its creation. The naming convention is illustrated as follows:



Job Project Code (JPC) is the CDOT project code, formerly known as the project subaccount number.

Specialty Group is the standardized abbreviation for the specialty group that the owner of the file is with.

Standardized Name denotes the type of data that is contained in the file.

Annotation Scale including the annotation scale in the file name is optional. However, it should be included in file names for projects that use multiple annotation scales.

Description A brief description can be used to further identify a model file. For sheet files, this field is used as a counter to differentiate between multiple files of a specific type.

File Extensions define the product used for its creation. Examples would be dgn for MicroStation, DTM for an InRoads surface, etc.

An example file name for a MicroStation design file would look like the following.

12345DES_Model100US285.dgn

12345 indicating the CDOT Project Number, DES indicates it is Roadway Design's model file and 100 indicating it uses a 1"=100' annotation scale, US285 is a description identifying the highway this model depicts. . DGN is the default extension for MicroStation design files.

Note: A seventh segment is used on Working Files. This segment should be the initials of the designer or engineer who is working on the file.
Example: **CU12345DES_Model100.dgn** where CU, are the initials of the designer or engineer (in this example, CU stands for "CDOT User").

Storing Model Files and Sheet Files

Model File Location

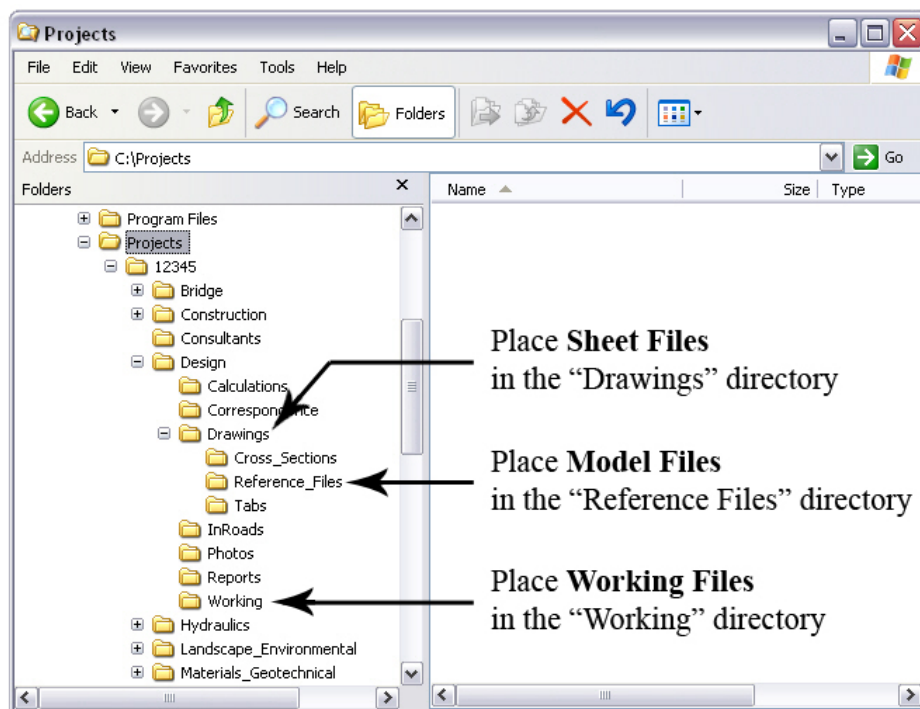
Model files should be stored in the `JPC#\SpecialtyGroup\Drawings\Reference_Files` folder. The exception to this is for cross-sections (design or construction) which have their own sub-directory under `\Drawings` sub-directory. Cross sections are separated from the rest of the model files at the request of the Reproduction department to simplify the process of assembling plan sets.

Working File Location

Working files should be stored in the `\JPC#\Specialty Group\Working` folder.

Sheet File Location

Sheet files should be stored in the `\JPC#\Specialty Group\Drawings` folder.



Creating a Model and Sheet Files

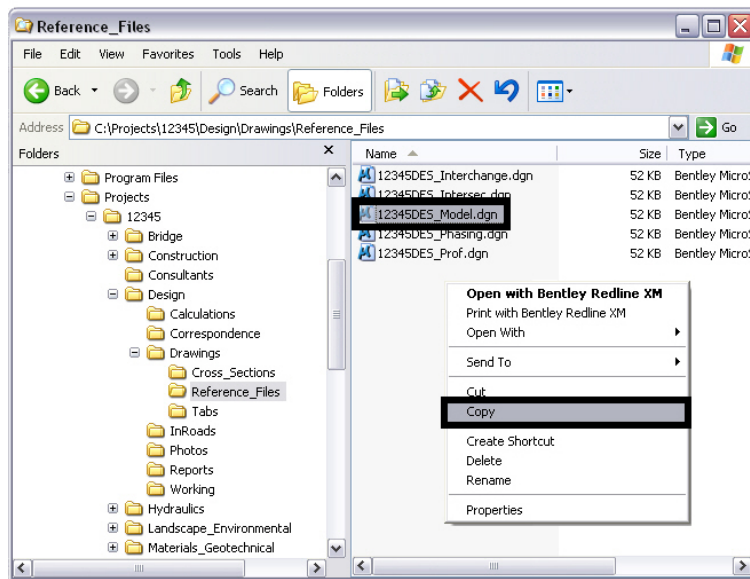
During the setup of a project, several model and sheet files are auto-populated into the `\JPC#\SpecialtyGroup\Drawings\Reference_Files` and `\JPC#\Specialty Group\Drawings` directories of each of the specialty group folders and have the CDOT standard file names already assigned. (Construction and Planning are exceptions and do not have any auto-populated files.) These auto-populated files can be modified to included project specific information before being used to create new drawings. In addition to the auto-populated files, standard 2D and 3D seed files are available from the `C:\Workspace\Workspace-CDOT_XM\Standards-Global\MicroStation\Seed` directory. These files are global standards and are write protected so that no changes can be made.

CDOT Working with Model Files and Sheet Files.pdf

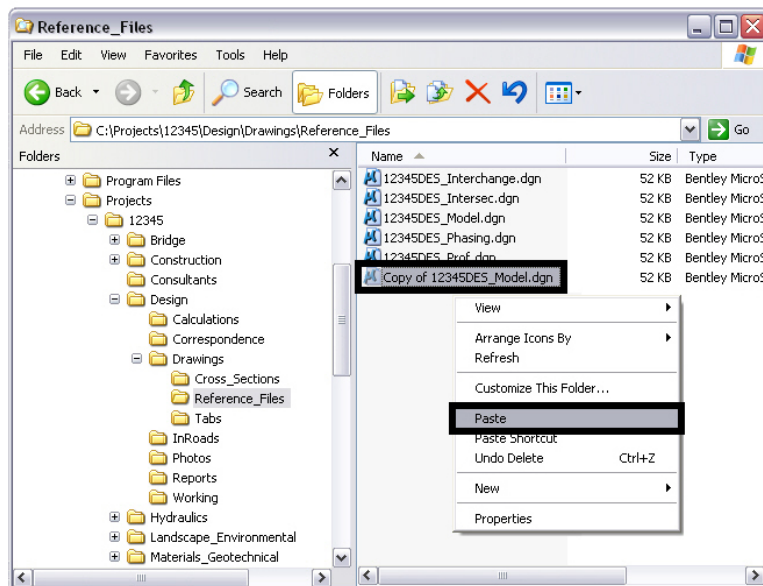
Several of methods can be used to begin a new drawing; 1) Use the Windows Explorer to copy, paste, and rename a file, or 2) use the MicroStation Manager window to create a new file using a seed file or to open a drawing and then use the “save-as” command to create the new file. If a new file with project specific data is required, use the Windows Explorer method. Otherwise, the MicroStation Manager method should be used.

Using Windows Explorer

1. Open the Windows Explorer window and navigate to the desired \Projects\JPC#\Specialty Group\ folder. Right Click on the desired file and select Copy from the menu.



2. In the blank area below the file list, right click and select Paste from the menu.

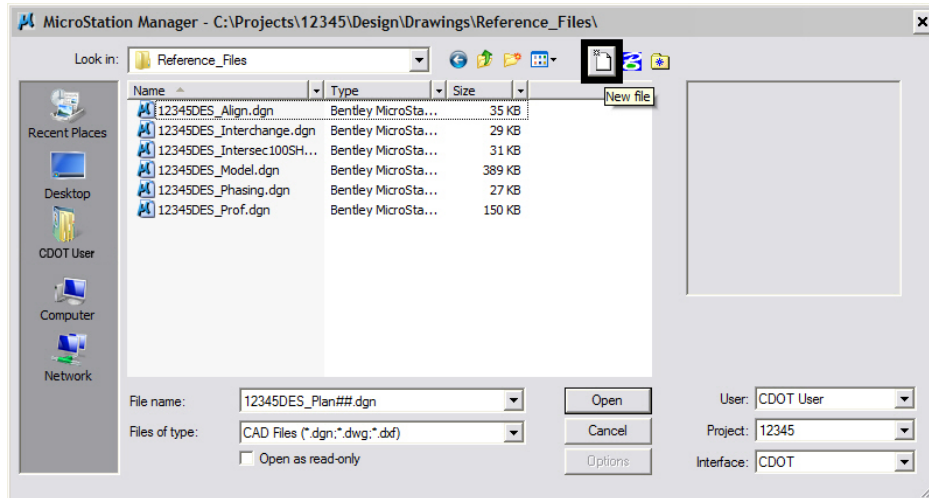


CDOT Working with Model Files and Sheet Files.pdf

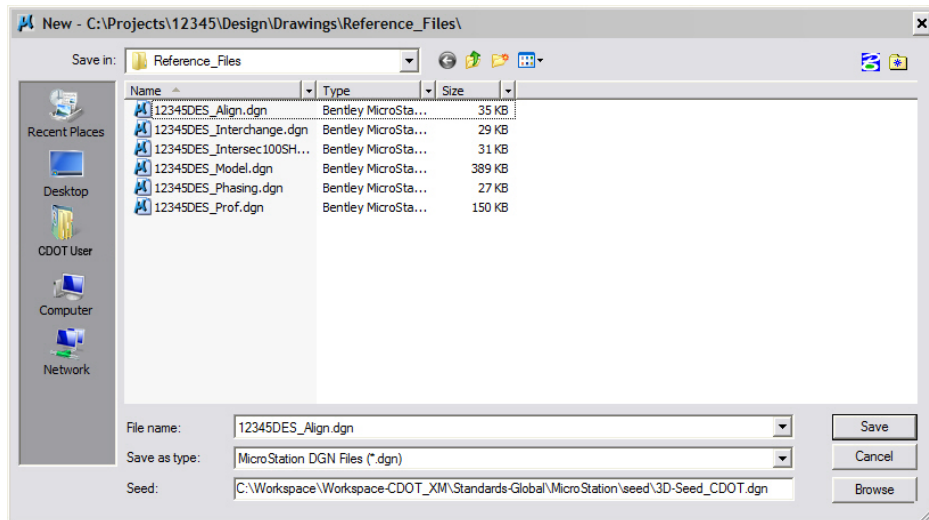
3. A copy of the selected file is placed in the folder. Rename the new file according to the file naming conventions. To rename the file right click on the file name and select **Rename** from the menu. Type in the new name and press the Enter key to finish.

Using a Seed File

4. Open MicroStation from the Start menu (or desktop icon if available). From the MicroStation Manager select <D> on the **New File** icon. If MicroStation is already open, select **File > New** from the menu.

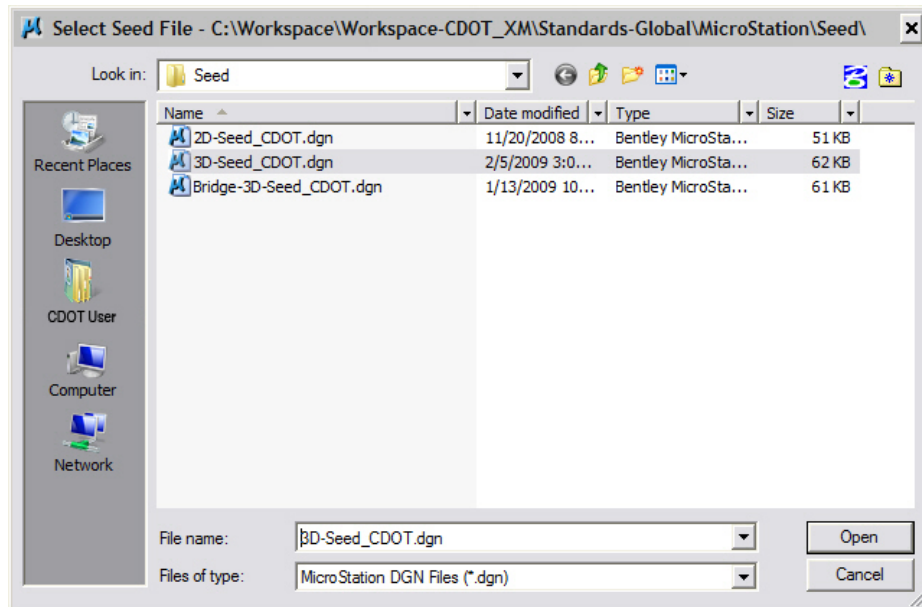


5. Both operations will display the **New file** command window.



CDOT Working with Model Files and Sheet Files.pdf

- From the New window, <D> on the **Browse** button to display the *Select Seed File* window.



- From the **Select Seed File** window, highlight the desired seed file. There are three seed files available: 2D-Seed_CDOT.dgn, 3D-Seed_CDOT.dgn, and Bridge-3D-Seed_CDOT.dgn. The 3D-Seed_CDOT.dgn can be used for any model or sheet file, but must be used for data that is located at real world coordinates. The 2D-Seed_CDOT.dgn can be used for sheet files and for model files whose data does not need to be at real world coordinates. Bridge-3D-Seed_CDOT.dgn is a bridge specific seed file.
- <D> the **Open** button to accept the selection. This will dismiss the Select Seed File window.
- In the New window, type the desired file name (Refer to the naming conventions above). <D> the **Save** button to accept the file name. MicroStation will create the new file.
- Select the newly created file and <D> **Open** to open the file.

Annotation and Line Style Scale

While the elements themselves are usually drawn at a 1" = 1' scale, a scale factor is set for line styles and text so that its size will be appropriate when printed.

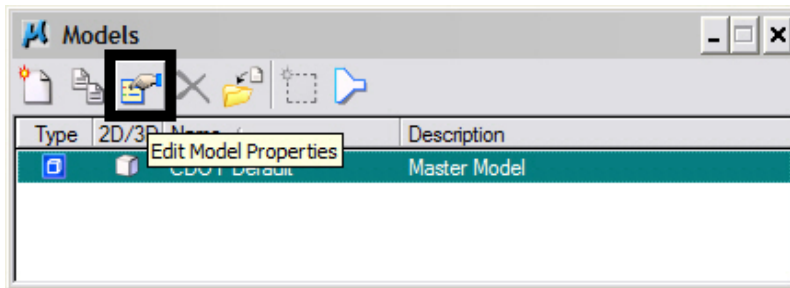
Setting the Annotation Scale

Annotation Scale controls text and dimension size. It is set in the model properties dialog box.

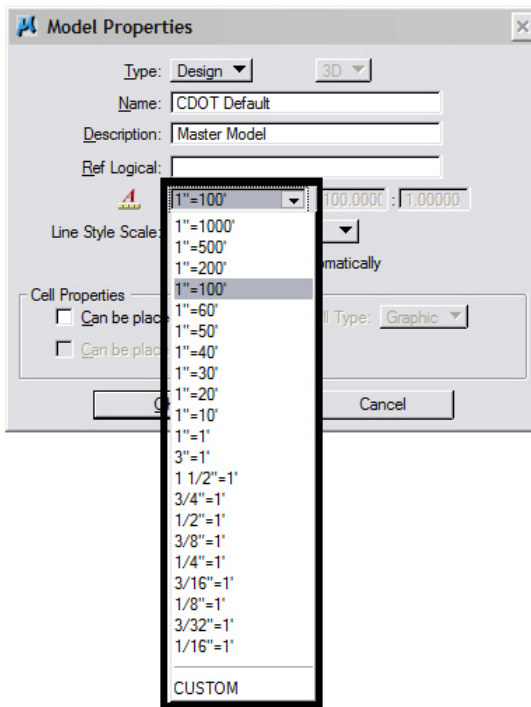
1. Select the Models icon from the Primary Tools toolbar.



2. This displays the Models dialog box. From here, select the Edit Model Properties icon.



3. In the Model Properties dialog box, select the desired Annotation Scale.

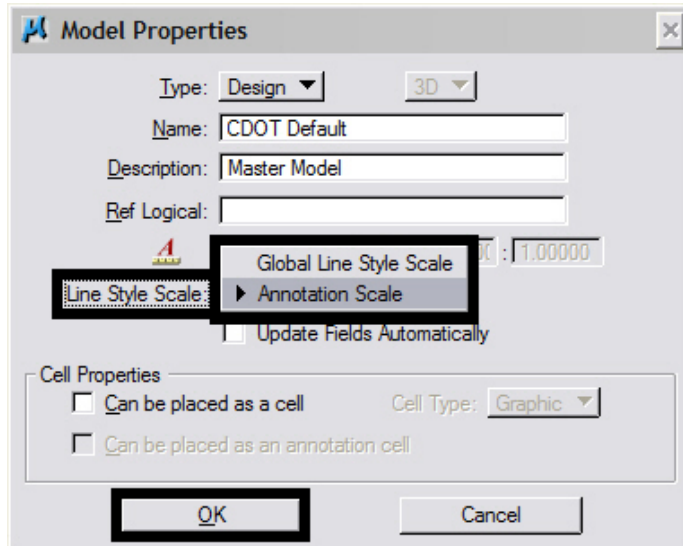


CDOT Working with Model Files and Sheet Files.pdf

4. <D> the OK icon to accept the selection. This will close the **Model Properties** dialog box. The Models dialog box can also be closed.

Setting the Line Style Scale

1. Set the Line Style Scale by <D> on appropriate setting. Default should be **Annotation Scale**. If the annotation scale setting is changed it will also change the linestyle scale. <D> the OK icon to accept the selection.



CDOT Working with Model Files and Sheet Files.pdf

Using Model Files From Other Users As References

A reference is a model that is attached to and displayed within the active model or sheet file for design or printing purposes. Elements in a reference display as though they were in the active model. Although you cannot manipulate the elements in a reference, you can snap to them and even copy them into the active model.

Model files created by other users can be used as references even if the file resides on a different computer. This is done by mapping the remote computer (the one containing the file to be referenced) to a drive letter on the local computer.

Mapping a Remote Computer

1. Open the **My Computer** window from the **Start** menu or desktop icon (if available).



2. From the **My Computer** window, select **Tools > Map Network Drive**.



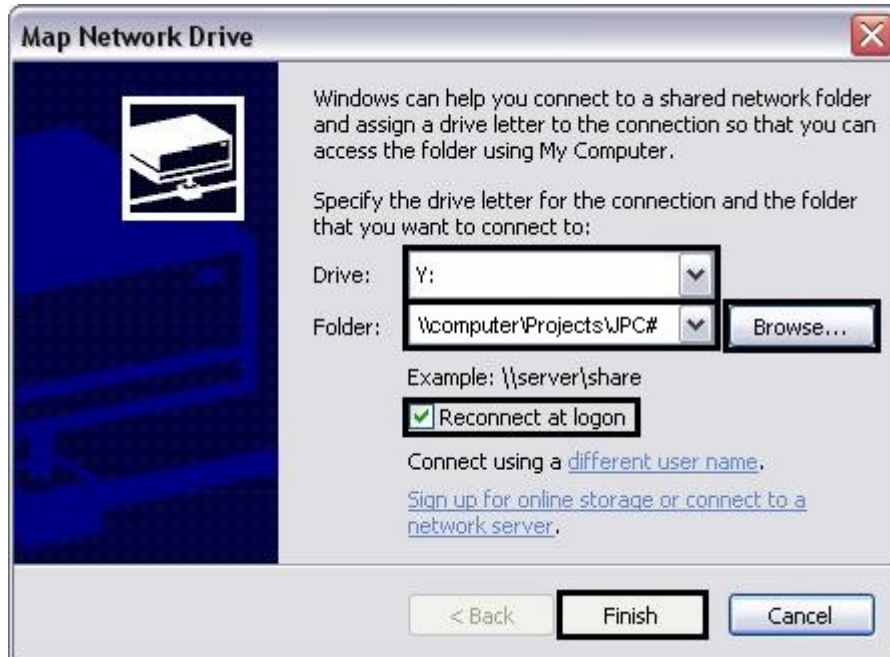
3. In the **Map Network Drive** dialog box, select the desired **Drive** letter.

CDOT Working with Model Files and Sheet Files.pdf

4. In the **Folder** field, enter the desired computer name and directory. The **Browse** icon can also be used to locate and select this information. The following format is used when keying in the computer information:

`\\computer_name\Projects\JPC#\`

5. If the information on the remote computer will be required over a period of many days, check on the **Reconnect at Login** option.
6. <D> the **Finish** icon to complete the process.



Files from the remote computer can now be referenced into local drawings. The procedures for referencing files are covered in the following workflows:

CDOT Sheet File Creation

CDOT Sheet File Creation Multiple Scales

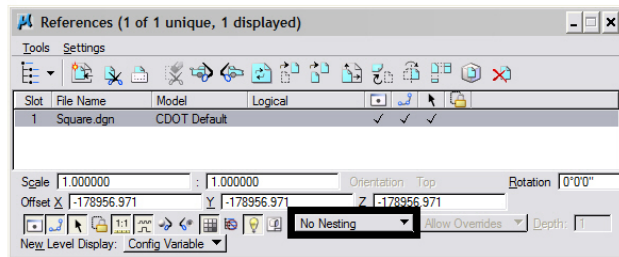
Nested Attachments

Reference attachment nesting determines what happens when a file containing attachments is attached to the active dgn file. The following examples are used to illustrate the different nesting options.

Four files are used in the examples. Blank.dgn is the active file. Square.dgn, Triangle.dgn, and Circle.dgn will be used as attachments. For the purposes of the examples, Circle.dgn has been previously attached to Square.dgn and Triangle.dgn has been previously attached to Circle.dgn.

No Nesting

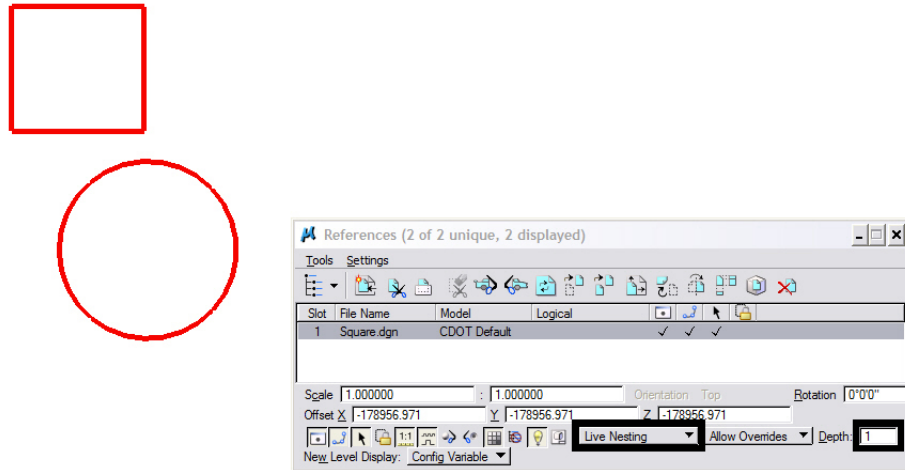
With this option, only the selected file will be visible in the active file.



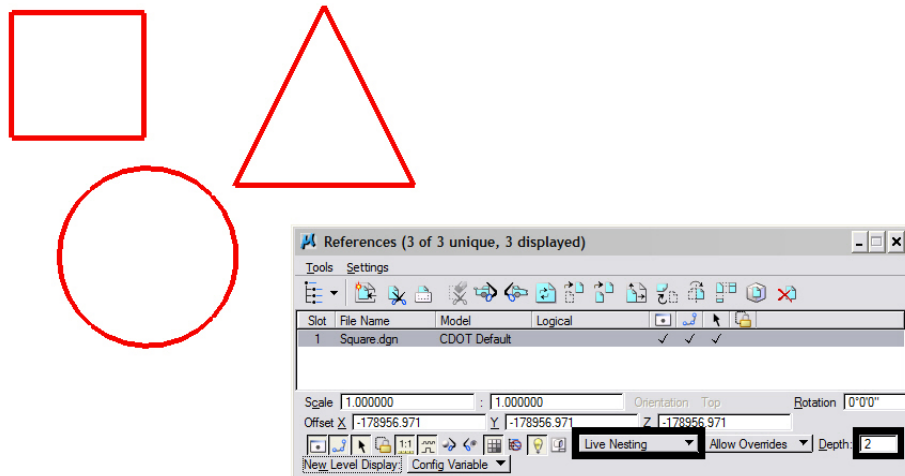
CDOT Working with Model Files and Sheet Files.pdf

Live Nesting

This option allows files that are attached to the selected file to be viewed.



The number of levels of attachments that can be viewed in this manner is controlled by the **Depth** setting. In the above illustration, Circle.dgn is attached directly to Square.dgn and is visible with a Depth setting of '1'. By changing the Depth setting to '2', files attached to Circle.dgn (in this case Triangle.dgn) become visible.

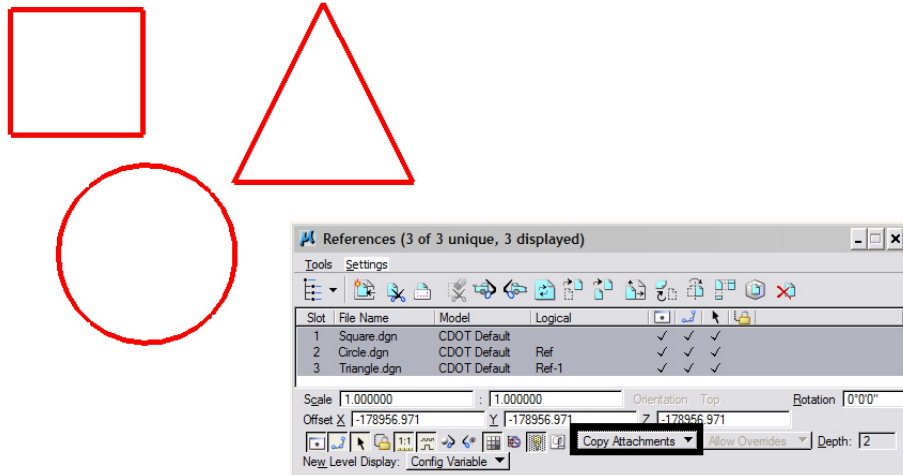


With live nesting, any reference file settings changes affect all of the visible files. So, for example, if the Display is turned off for Square.dgn, Circle.dgn and Triangle.dgn are turned off also. (**Note:** level display of nested attachments is discussed below.)

CDOT Working with Model Files and Sheet Files.pdf

Copy Attachments

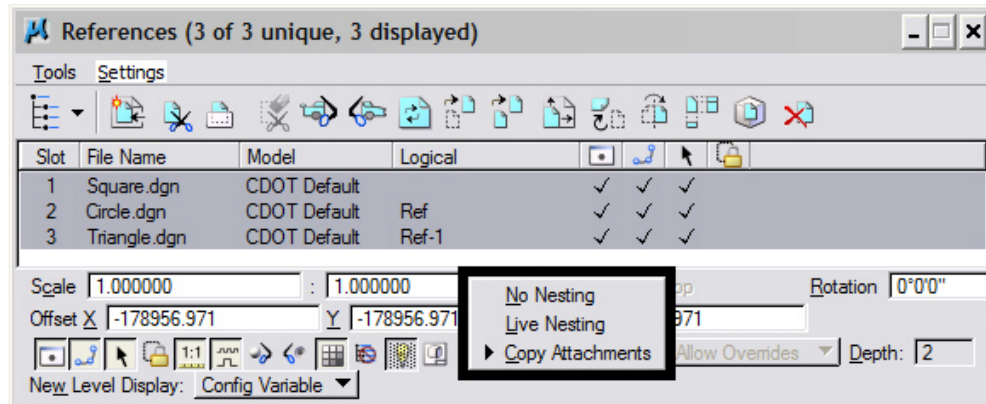
This option also allows multiple levels of attachments to be viewed, however, it also allows independent control of each attachment. Compare the illustration below with those for Live Nesting. Here, each attached file is listed in the References dialog box and its settings can be adjusted independently.



Changing the Nesting Mode

The Nesting Mode for a single file or a group of attachments can be changed from the References dialog box. To change the nesting mode:

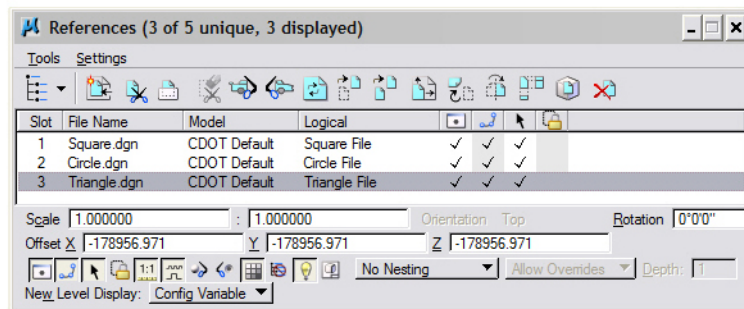
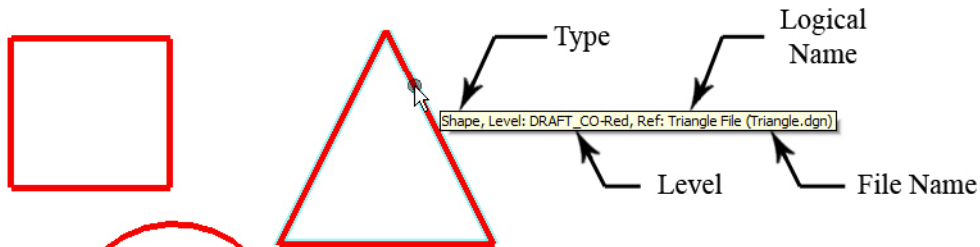
1. Highlight the desired files from the list.
2. Use the pull-down at the bottom of the dialog box to select the desired nesting mode.



CDOT Working with Model Files and Sheet Files.pdf

Determining an Element's File

Just by looking, there is no way to determine which file an element belongs to. However, placing the cursor over the element will display a tool tip listing the element's Type, Level, the Logical Name of the attachment, and its actual file name.



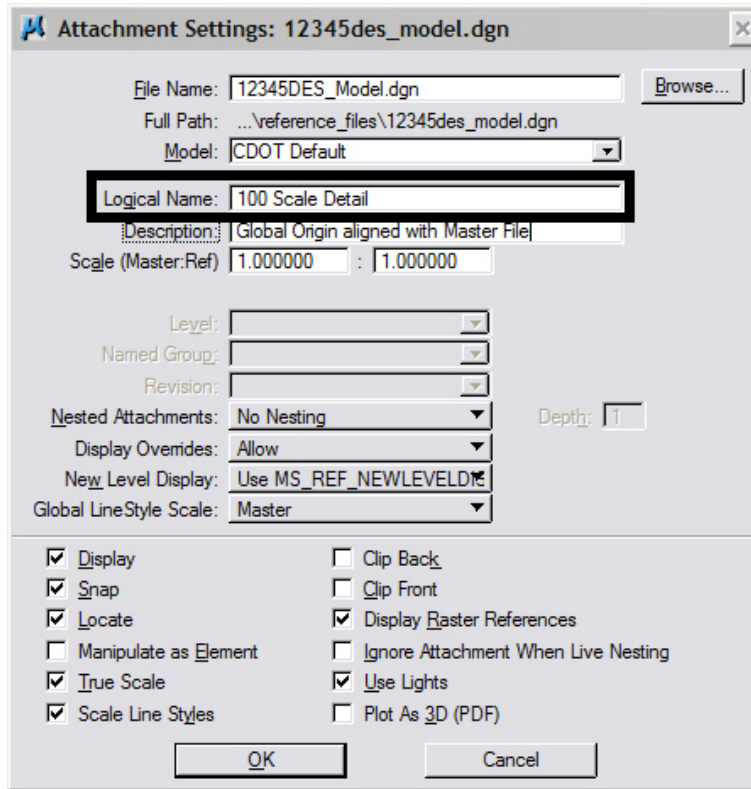
Logical Names and Slot Numbers for Reference Attachments

Logical Names

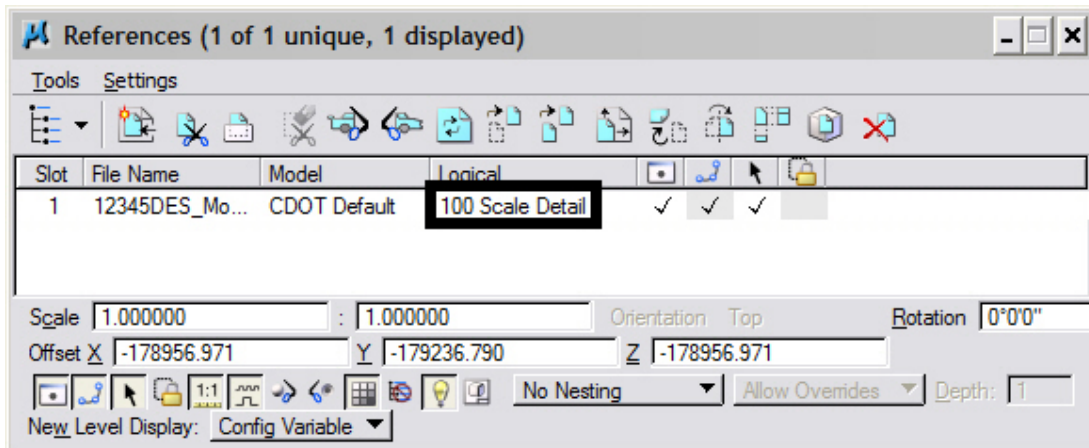
In MicroStation, a file can be used as an attachment within a single file numerous times. Logical Names are used to distinguish one version of the attachment from another. A logical name can be given to any attachment, but must be given to the second and subsequent attachments of a file.

To give a logical name to an attachment, begin the attachment procedure as normal. When the Reference Attachment Settings dialog box displays, key in the desired logical name in the field provided. Finish the attachment process as normal.

CDOT Working with Model Files and Sheet Files.pdf



The logical name is displayed in the References dialog box as illustrated below:



Slot Numbers

Slot numbers are assigned to attachments to provide another method of grouping the files. They are used to assign the processing order when making shaded color or grayscale prints. For more information on using slot numbers in this process, see:

[CDOT Shaded Color And Grayscale Printing.pdf](#)